

ENERGY RECOVERY VENTILATOR SCHEDULE																												
TAG	MANUFACTURER	MODEL	SERVICE	WEIGHT	SUPPLY FAN			RETURN FAN			OUTDOOR AIR				RETURN AIR				SUPPLY AIR				FILTER		ELECTRICAL			NOTES
					AIR FLOW (CFM)	ESP (IN.WG)	POWER (KW)	AIR FLOW (CFM)	ESP (IN.WG)	POWER (KW)	SUMMER DB (DEG.F)	SUMMER WB (DEG.F)	WINTER DB (DEG.F)	WINTER WB (DEG.F)	SUMMER DB (DEG.F)	SUMMER WB (DEG.F)	WINTER DB (DEG.F)	WINTER WB (DEG.F)	SUMMER DB (DEG.F)	SUMMER WB (DEG.F)	WINTER DB (DEG.F)	WINTER WB (DEG.F)	FILTER QUANTITY	EFFY (%)	VOLTAGE	PHASE	MCA (AMPS)	
ERV-1	OXYGEN 8	B220U	VENTILATION AIR	627	1000	0.75	2	1000	0.75	2	84 °F	69 °F	0 °F	0 °F	75 °F	63 °F	70 °F	53 °F	78 °F	66 °F	44 °F	36 °F	MERV-13	85%	208	3	13.83	

VRF INDOOR UNIT												
TAG	MANUFACTURER	MODEL	SERVICE	AIRFLOW (CFM)	COOLING (BTU)	HEATING (BTU)	VOLTAGE	PHASE	MCA (AMPS)	MOPD (AMPS)	WEIGHT (LBS)	NOTES
OU-1												
IJ-101	DAIKIN	FXZQ1STAVJU	C301 - MAKER SPACE	405	14323	17743	208	1	0.4	15	37	
IJ-102	DAIKIN	FXZQ05TAVJU	C301A - OFFICE	300	5455	6824	208	1	0.4	15	36	
IJ-103	DAIKIN	FXZQ12TAVJU	C301B - CONFERENCE	353	11425	13980	208	1	0.3	15	37	
IJ-104	DAIKIN	FXZQ05TAVJU	C301C - OFFICE	300	5455	6824	208	1	0.3	15	36	
IJ-105	DAIKIN	FXZQ18TAVJU	C301D - CAMPFIRE	511	17048	20814	208	1	0.6	15	42	
IJ-106	DAIKIN	FXZQ05TAVJU	C301E - OFFICE	300	5455	6824	208	1	0.3	15	36	
IJ-107	DAIKIN	FXZQ05TAVJU	C301F - OFFICE	300	5455	6824	208	1	0.3	15	36	
IJ-108	DAIKIN	FXZQ05TAVJU	C301G - OFFICE	300	5455	6824	208	1	0.3	15	36	
IJ-109	DAIKIN	FXZQ15TAVJU	C301H - HUDDLE	405	14323	17743	208	1	0.4	15	37	
IJ-110	DAIKIN	FXZQ07TAVJU	C301K - RECEPTION	307	7161	8872	208	1	0.3	15	36	
IJ-111	DAIKIN	FXZQ15TAVJU	C301L - COLLABORATION	300	14323	17743	208	1	0.4	15	37	

VRF OUTDOOR UNITS								
TAG	MANUFACTURER	MODEL	VOLTS	PHASE	MCA	MOPD	WEIGHT	NOTES
OU-1	DAIKIN	RXYQ72XATJA	208	3	27.6	35	437	

FINTUBE RADIATION SCHEDULE									
TAG	MANUFACTURER	MODEL	PIPE SIZE (IN.)	CAPACITY BTU/FT	FIN DIMENSIONS WxH (IN)	FPF	ROWS	ENCLOSURE DIMENSIONS (W x H) (IN.)	NOTES
A	STERLING	JVB-S C314-433	3/4"	930	3-5/8" x 4-1/4"	32	1	5-5/16" x 14"	

REHEAT COIL SCHEDULE																
TAG	MANUFACTURER	MODEL	SERVICE	CAPACITY (MBH)	AIRFLOW	EAT (DEG.F)	LAT (DEG.F)	APD (IN.WG)	FLOW (GPM)	EWT (DEG.F)	LWT (DEG.F)	WPD (IN.WG)	COIL LENGTH	NOMINAL HEIGHT (IN)	ROWS	NOTES
HWC-1	DAIKIN	5BS0902B	VENTILATOIN AIR	38472 Btu/h	1000	40 °F	75 °F	0.53	3.8 GPM	190 °F	165 °F	2.3	10	15	2	

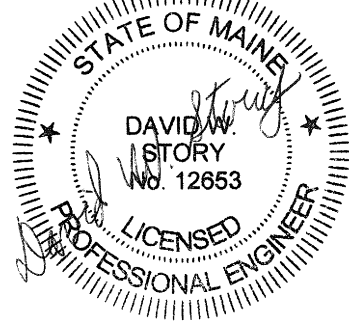
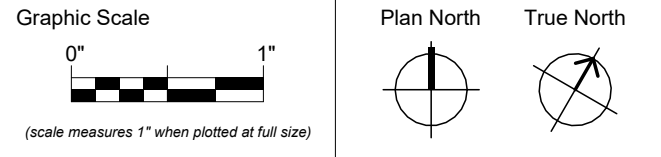
REGISTERS, GRILLES & DIFFUSERS SCHEDULE					
TAG	MODEL	TYPE	NECK SIZE (IN)	BORDER	NOTES
R1	80	GRID CORE	10 x 10		SURFACE MOUNT
R2	80	GRID CORE	8 x 8		SURFACE MOUNT
S1	SMD SERIES	CEILING DIFFUSER	6 x 6		SURFACE MOUNT
S2	SMD SERIES	CEILING DIFFUSER	6 x 9		SURFACE MOUNT
GENERAL NOTES: A. BASIS OF DESIGN- PRICE INDUSTRIES B. MAX NC = 25 UNLESS NOTED OTHERWISE C. MAX SP = 0.1 UNLESS NOTED OTHERWISE D. BAKED ENAMEL WHITE FINISH UNLESS NOTED OTHERWISE					

Harriman

USM
BAILEY HALL
CENTER FOR
TEACHING INNOVATION
RENOVATION

GORHAM, MAINE

Harriman Project No. 22211



CONSTRUCTION DOCUMENTS

NOVEMBER 21, 2022

Revision Date	Revision Description
01-06-2023	ADDENDUM 3
01-13-2023	ADDENDUM 4

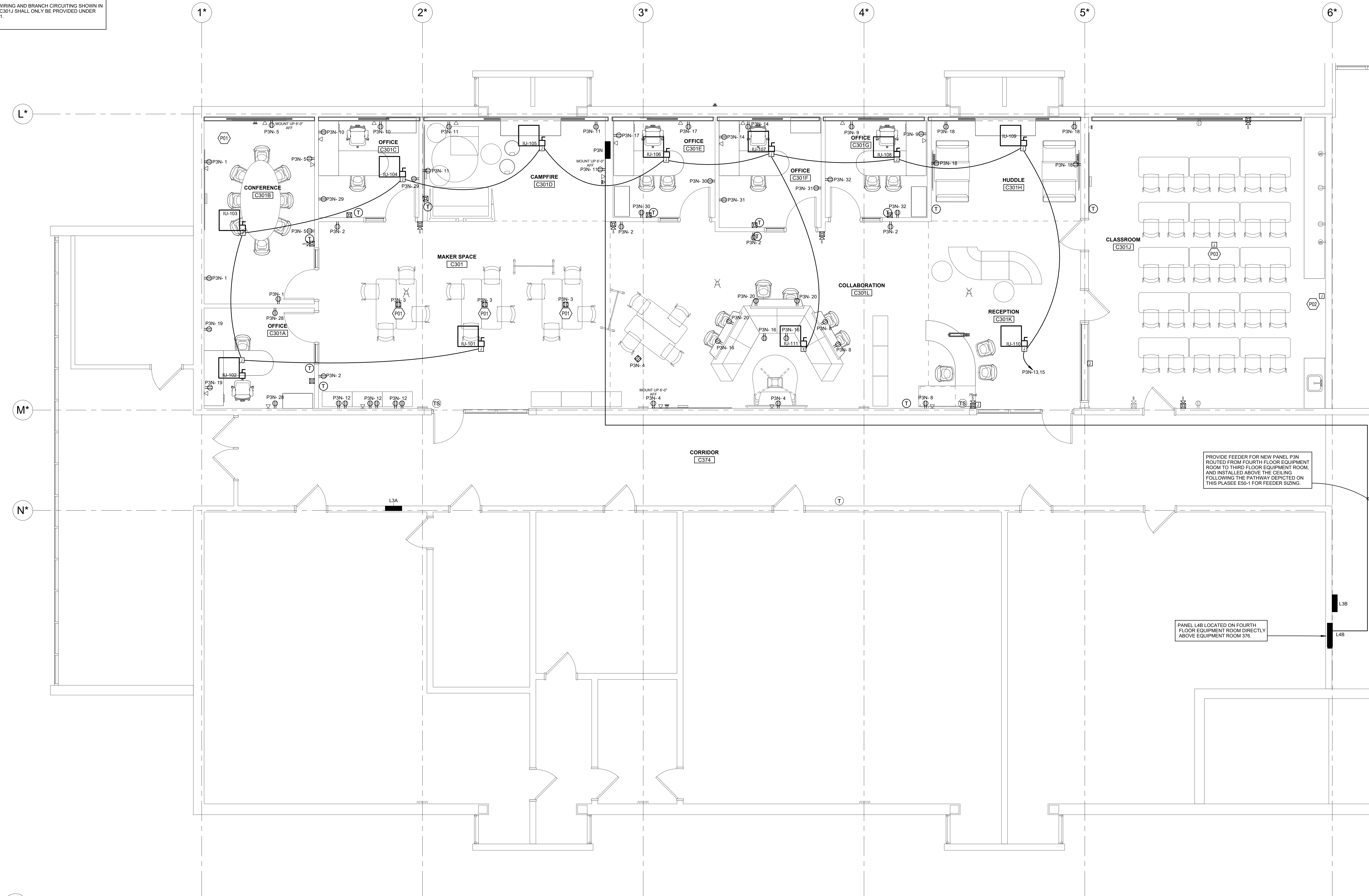
Drawn by: JSH

SCHEDULES

M60-1

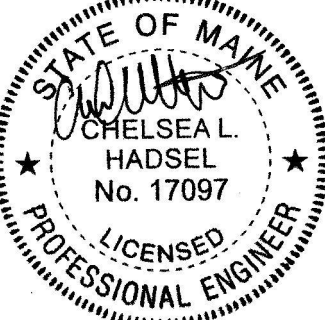
- GENERAL SHEET NOTES**
- A. WHERE CONNECTED TO A 20A. BRANCH CIRCUIT SUPPLYING AN INDIVIDUAL RECEPTACLE (SIMPLEX OR DUPLEX), THE RECEPTACLE SHALL BE RATED AT 20A.
- B. PROVIDE HOUSEKEEPING PADS FOR ALL FLOOR MOUNTED AND GRADE MOUNTED ELECTRICAL EQUIPMENT. MINIMUM REQUIREMENTS: 4" HIGH, 4 1/4" AIR ENTRAINED POLYFIBER REINFORCED CONCRETE, 4" WIDER AND 4" LONGER THAN EQUIPMENT TO BE PLACED ON IT. REFER TO ELECTRICAL DETAIL DRAWINGS FOR TRANSFORMER, GENERATOR, OR SWITCHGEARPADS THAT MAY EXCEED THESE REQUIREMENTS.
- C. WIRE COUNTS FOR CIRCUIT CONDUCTORS ARE NOT SHOWN. PROVIDE PROPER NUMBER OF CONDUCTORS TO ACHIEVE CIRCUIT AND SWITCHING CONNECTIONS SHOWN.
- D. MODIFICATIONS TO NUMBER OF CONDUCTORS IN HOME RUNS IN ADDITION TO CIRCUITS INDICATED ON THIS DRAWING ARE PROHIBITED. THE SHARING OF NEUTRALS IS PROHIBITED.
- E. CIRCUIT WIRING IS NOT SHOWN EXCEPT FOR SWITCHING INTENT OF FIXTURES AND CONTROL OF DEVICES.
- F. PROVIDE PROPER NUMBER OF CONDUCTORS TO ACHIEVE CIRCUITING AND SWITCHING SHOWN. THE SHARING OF NEUTRALS IS PROHIBITED.
- G. CIRCUIT NUMBERS AT DEVICES CORRESPOND TO PANEL BOARD BREAKERS (SEE PANEL BOARD SCHEDULE). BRANCH CIRCUITS SHALL BE SIZED ACCORDING TO THE CIRCUIT BREAKER RATING UNLESS INDICATED OTHERWISE ON THE ELECTRICAL EQUIPMENT SCHEDULE.
- H. ALL DEVICE, WIRING AND BRANCH CIRCUITING SHOWN IN CLASSROOM C301J SHALL ONLY BE PROVIDED UNDER ALTERNATE #1.

- KEYED SHEET NOTES**
- P01... PROVIDE FLAT, SURFACE MOUNTED RACEWAY ON TOP OF FLOOR FOR POWER FEEDERS TO CONFERENCE TABLES. PROVIDE LEGRAND WIREMOLD OFF SERIES OVERFLOOR RACEWAY BASE AND COVER (OFBCBP-8) AND LEGRAND OFF SERIES OVERFLOOR RACEWAY TRANSITION BOX (OFRTS-2MTC).
- P02... REINSTALL EXISTING AV CONTROL PANEL IN WALL. RECONNECT TO EXISTING WIRING.
- P03... REORIENT EXISTING PROJECTOR TOWARD EXTERIOR WALL (SHEET VIEW NORTH).



PROVIDE FEEDER FOR NEW PANEL P3N ROUTED FROM FOURTH FLOOR EQUIPMENT ROOM TO THIRD FLOOR EQUIPMENT ROOM, AND INSTALLED ABOVE THE CEILING FOLLOWING THE PATHWAY DEPICTED ON THIS PLASSEE E20-1 FOR FEEDER SIZING.

PANEL L4B LOCATED ON FOURTH FLOOR EQUIPMENT ROOM DIRECTLY ABOVE EQUIPMENT ROOM 376.



CONSTRUCTION DOCUMENTS

NOVEMBER 21, 2022

Revision Date Revision Description
01-13-2023 ADDENDUM 4

Drawn by: ATB

THIRD FLOOR PLAN
POWER AND SYSTEMS

E20-3