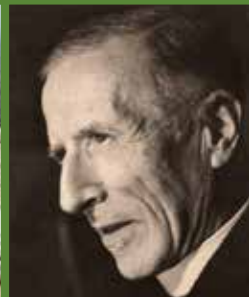


# Summer 2018

June 19 – July 26

# CLASS SCHEDULE





# General Information

If you are 50 or older, with a curious mind and an interest in learning just for the joy of it, you are invited to join 2,000-plus like-minded older learners who are members of the Osher Lifelong Learning Institute (OLLI) on the Portland campus of the University of Southern Maine. OLLI at USM is committed to providing its members with a wide variety of stimulating courses, lectures, workshops, and complementary activities in a creative and inclusive learning community.

As a member of OLLI at USM, you'll choose from an extensive array of peer-taught courses in the liberal arts and sciences. There are no entrance requirements, grades, or tests. Your experience and love of learning are what count. Some OLLI at USM classes involve homework — usually reading or honing skills taught in class. Homework is not mandatory, but it can enhance your learning experience; what you put in is what you'll get out of the course.

OLLI at USM is one of 17 Senior Colleges throughout Maine and participates in the Maine Senior College Network ([www.maineseniorcollege.org](http://www.maineseniorcollege.org)). The National Resource Center for all Osher Lifelong Learning Institutes ([www.osher.net](http://www.osher.net)) is located at Northwestern University in Chicago. Currently, there are 120 OLLIs throughout the country.

## MEMBERSHIP

OLLI at USM is a self-sustaining, self-governing organization supported through an annual membership fee of \$25. The membership fee covers the fiscal year July 1 to June 30. Your annual membership allows you to participate in all OLLI at USM courses and Special Interest Groups at OLLI. You'll also get Internet access and notification when the OLLI Newsletter is available online.

## SPECIAL ACCOMMODATIONS

OLLI at USM has purchased a portable assistive-listening device that can be used in any Wishcamper classroom. Students using the device will be able to hear the instructor. Any OLLI at USM student with hearing difficulties may request the use of this system. Contact the OLLI at USM office at 780-4406 as soon as you register for class.

If you need other special accommodations to participate in OLLI at USM because of disability, please call the USM Office of Support for Students with Disabilities at 780-4706 as soon as you register but at least two weeks before classes begin.

## SCHOLARSHIPS

Full and partial scholarships are available through a simple, friendly, confidential process. Because of the overwhelming response, scholarships are limited to \$50 per person per term, applicable to one course, the SAGE program, or workshops. Scholarships do not apply to OLLI at USM membership, trips, or special events. Scholarship applications are available in the OLLI at USM office. **These must be completed, signed, and turned in with each of your course registrations.**

**NOTE: It is not possible to register for courses online with a scholarship. Please mail or bring your registration form and scholarship to the OLLI office BEFORE registration day to ensure timely enrollment in your class.**

Call 780-4406 for more information.

## CLASS LOCATIONS

All classes, except where noted, are held in the Wishcamper Center at 44 Bedford Street on the USM Portland campus. See map on page 6.

### OLLI STAFF

Susan Morrow, Assistant Director for Program  
228-8181; [smorrow@maine.edu](mailto:smorrow@maine.edu)

Rob Hyssong, OLLI Program Coordinator  
228-8336; [robert.hyssong@maine.edu](mailto:robert.hyssong@maine.edu)

Linda Skinner, Administrative Specialist 1  
228-8225; [linda.skinner@maine.edu](mailto:linda.skinner@maine.edu)

Sue Schier: Administrative Specialist 2  
228-8482; [sue.schier@maine.edu](mailto:sue.schier@maine.edu)

### FOR MORE INFORMATION

Call: 780-4406 or 1-800-800-4876  
E-mail: [olliatusm@maine.edu](mailto:olliatusm@maine.edu)  
Visit: [www.usm.maine.edu/olli](http://www.usm.maine.edu/olli) to register for OLLI courses online

### OLLI ADVISORY BOARD 2017-18

- Janet Stebbins, Chair
- Steve Schiffman, Vice Chair
- Dick Leslie, Secretary
- Sue Gesing, Education Chair
- Matt Goldfarb, SAGE Chair
- Gael McKibben and  
Rae Garcelon, Community Co-Chairs
- Elsa van Bergen, Communications Chair
- Wes Bonney and  
Georgia Koch, Co-Nominating Chairs
- Walter Allan
- Paul Doherty
- Elizabeth Housewright
- Susan Jennings
- Tom McGovern



# Online Registration at OLLI at USM

Online registration allows you to sign up for classes in real time. To begin the process, visit the OLLI website at: [www.usm.maine.edu/olli](http://www.usm.maine.edu/olli)

There you will find a link to the registration website on the home page and step-by-step instructions under “Resources” on the left. Once you have perused the catalog and chosen which classes you wish to “purchase,” you are ready to go “shopping” on the registration website. You’ll be able to tell how many spaces are still available in your chosen class and can add your name to a wait list if a class is full.

Once you pay for your classes, you’ll receive e-mail confirmation of your registration. It’s fast, easy, and secure. **Please note:** Credit card is the **only** form of

payment you can use for online registration. **If you must use another payment form (check, cash, scholarship, gift certificate), you’ll need to mail or hand deliver your registration with payment attached.**

If you’ve shopped online, you should find online OLLI registration a snap. But if you’re not comfortable doing your own online registration at home, the OLLI staff is standing by to help you. We offer onsite instruction in the Wishcamper Computer Lab (see timeline) and have one computer in the OLLI office dedicated to online registration. Anyone may use this computer to register online, but **you must use a credit card for payment.**

## Important SUMMER Term Dates

### OLLI Summer REGISTRATION TIMELINE

**April 30** Online registration for OLLI summer courses begins.  
*The registration system will automatically turn on at 12:01 a.m.*

**Students with scholarships, gift certificates, free memberships, or other waivers must get registrations into the OLLI office before this deadline for staff to process promptly.**

**NOTE: Since your registration will be competing with online enrollments, we can’t guarantee your first-choice class, but you will be our top priority the morning after registration goes “live.”**

**April 30** **If you need help navigating the online process,** onsite help setting up student accounts and registering for classes will be available in the Wishcamper Computer Lab (Room 128) starting at 8 a.m.

**May 7** OLLI staff will start accepting mail-in, drop-off, and phone registrations.

**May 28** OLLI and USM closed for Memorial Day.

**June 19** OLLI summer term classes start.

**June 29** Deadline to receive refund on dropped classes.

**July 4** OLLI and USM closed for Fourth of July.

**July 26** OLLI summer term ends.

**July 31-Aug. 2** OLLI summer term makeup week.

### WHERE’S MY CLASS??

All classes are in Wishcamper unless otherwise noted.

Individual classes and their locations are posted at all entrances and on the electronic bulletin board in the OLLI lobby.

### CLASS CANCELLATIONS:

**For weather closings, call the USM storm line at 780-4800. *If USM is closed, OLLI will be closed.***

**TUESDAY AFTERNOON**  
12:45-2:45

*See page 7*

**Exploring the  
Consciousness in Matter:  
Teilhard de Chardin and  
His Milieu**

Paul Doherty, Joan Aldrich

**The Great Musical  
Composers Series:  
Rodgers & Hammerstein**  
DeWayn Marzagalli

**Retirement Recap: Keep,  
Give, Enjoy, and Protect  
Your Money**  
Kerry Peabody

**WEDNESDAY MORNING**  
9:30-11:30

*See page 8*

**Discovering the Courage  
to Create**  
Paul Kiley

**The West and East:  
A Single Unity**  
John McLaughlin

**What Do Animals Think  
and Feel?**  
Steven Piker

**Orchestration of War:  
Ellsberg, Movies, and the  
Unspoken Nuclear Threat**  
Ed Solano

**WEDNESDAY AFTERNOON**  
12:45-2:45

*See page 9*

**Psychology Looks  
at the Movies, 10**  
Mike Berkowitz

**Mandala and the Circle  
of Life**  
Linda Carleton

**Films on Teaching  
As a Calling**  
Pat Davidson Reef

**Explore Portland's  
Historic Neighborhoods  
on Foot**  
Bruce Wood

**THURSDAY MORNING**  
9:30-11:30

*See page 10*

**Chinese Painting:  
Landscapes and  
Seascapes**  
Sabine de Canisy

**Summer Film Festival**  
Terry Foster

**19th-Century America:  
Prequel to the American  
Century**  
Alicia Harding

**THURSDAY AFTERNOON**  
12:30-3:30

*See page 11*

**Spiritual Aspects  
of Relationship: A Series  
of Film Discussions**  
Joan Aldrich

**THURSDAY AFTERNOON**  
12:45-2:45

*See page 11*

**Memoir Story Circle**  
Norman Abelson

**Visiting and Revisiting  
Shakespeare: Plays and  
Sonnets, Part 2**  
Evy Newlyn

**Paper Arts Camp:  
Reviving the Snail-Mail  
Tradition**  
Dianne Sinclair

**FRIDAY MORNING**  
9:30-11:30

*See page 12*

**History of Portland  
through Six Walks**  
John Serrage

**REGISTRATION FORM  
& INFORMATION  
FOR CLASSES &  
WORKSHOPS:  
SEE PAGES 16-17.**

## Workshops

*See pages 13-15*

**Friday, July 6**  
9:30-11:30 a.m.

**Dread Having Difficult  
Conversations? Tips  
for a More Successful  
Outcome**  
Anne Cass

**Friday, July 6**  
9:30-11:30 a.m.

**Opera! Music and Words**  
Calien Lewis

**Friday, July 6**  
9 a.m. - 1 p.m.

**James Joyce's *The Dead***  
Bob McCue

**Friday, July 6 & 13**  
9:30 - 11:30 a.m.

**Poems that Move Us:  
Exploring Human  
Connections**  
Paul Kiley

**Friday, July 6, 13, & 20**  
9:30-11:30 a.m.

**Introduction to Buddhism  
and Meditation**  
Heather Edgerly

**Friday, July 13**  
9:30 a.m.-12:30 p.m.

**Maine's Beaches Are  
Public Property: The  
Bell Cases Must be  
Reexamined**  
Orlando Delogu

**Friday, July 13**  
9:30-11:30 a.m.

**Migratory Bird Monitoring  
at River Point Bird  
Observatory**  
Patrick Keenan

**Friday, July 13**  
9:30-11:30 a.m.

**The Music of the Cinema,  
Part 3 - From the '80s to  
the Present**  
DeWayn Marzagalli

**Friday, July 13**  
9:30-11:30 a.m.

**Understanding the  
National Security  
Clearance Process**  
Dan Possumato

**Friday, July 13**  
9:30-11:30 a.m.

**Hidden Ireland:  
A Native's Perspective**  
Ann Quinlan

**Friday, July 20**  
9:30-11:30 a.m.

**PowerPoint Slideshows:  
Inserting Videos**  
Mike Berkowitz

**Friday, July 20**  
9:30 a.m.-3:30 p.m.

**Where We End Up, and How**  
Janet Gunn

**Friday, July 20**  
9:30 a.m.-3:30 p.m.

**The God Delusion**  
Steven Piker



# Course/Workshop List by Instructor

Instructor	Title	Day/Date	Time	Page
Abelson, Norman	Memoir Story Circle	TH	PM	11
Aldrich, Joan	Exploring the Consciousness in Matter: Teilhard de Chardin and His Milieu	TU	PM	7
Aldrich, Joan	Spiritual Aspects of Relationship: A Series of Film Discussions	TH	PM	11
Berkowitz, Mike	Psychology Looks at the Movies	W	PM	9
Bertowitz, Mike	PowerPoint Slideshows: Inserting Videos	July 20	AM	15
Carleton, Linda	Mandala and the Circle of Life	W	PM	9
Cass, Anne	Dread Having Difficult Conversations? Tips for a More Successful Outcome	July 6	AM	13
de Canisy, Sabine	Chinese Painting: Landscapes and Seascapes	TH	AM	10
Delogu, Orlando	Maine's Beaches Are Public Property: The Bell Cases Must be Reexamined	July 13	AM	14
Doherty, Paul	Exploring the Consciousness in Matter: Teilhard de Chardin and His Milieu	TU	PM	7
Edgerly, Heather	Introduction to Buddhism and Meditation	July 6, 13, 20	AM	14
Foster, Terry	Summer Film Festival	TH	AM	10
Gunn, Janet	Where We End Up, and How	July 20	ALL DAY	15
Harding, Alicia	19th-Century America: Prequel to the American Century	TH	AM	10
Keenan, Patrick	Migratory Bird Monitoring at River Point Bird Observatory	July 13	AM	14
Kiley, Paul	Discovering the Courage to Create	W	AM	8
Kiley, Paul	Poems that Move Us: Exploring Human Connections	July 6 & 13	AM	13
Lewis, Calien	Opera! Music and Words	July 6	AM	13
Marzagalli, DeWayn	The Great Musical Composers Series: Rodgers & Hammerstein	TU	PM	7
Marzagalli, DeWayn	The Music of the Cinema, Part 3 - From the 80s to the Present	July 13	AM	14
McCue, Bob	James Joyce's <i>The Dead</i>	July 6	AM	13
McLaughlin, John	The West and East: A Single Unity	W	AM	8
Newlyn, Evy	Visiting and Revisiting Shakespeare: Plays and Sonnets, Part 2	TH	PM	11
Peabody, Kerry	Retirement Recap: Keep, Give, Enjoy and Protect Your Money	TU	PM	7
Piker, Steve	What Do Animals Think And Feel?	W	AM	8
Piker, Steve	The God Delusion	July 20	ALL DAY	15
Possumato, Dan	Understanding the National Security Clearance Process	July 13	AM	15
Quinlan, Ann	Hidden Ireland: A Native's Perspective	July 13	AM	15
Reef, Pat	Films on Teaching As a Calling	W	PM	9
Serrage, John	History of Portland through Six Walks	F	AM	12
Sinclair, Dianne	Paper Arts Camp: Reviving the Snail-Mail Tradition	TH	PM	11
Solano, Ed	Orchestration of War: Ellsberg, Movies, and the Unspoken Nuclear Threat	W	AM	8
Wood, Bruce	Explore Portland's Historic Neighborhoods on Foot	W	PM	9



# Campus Map and Parking

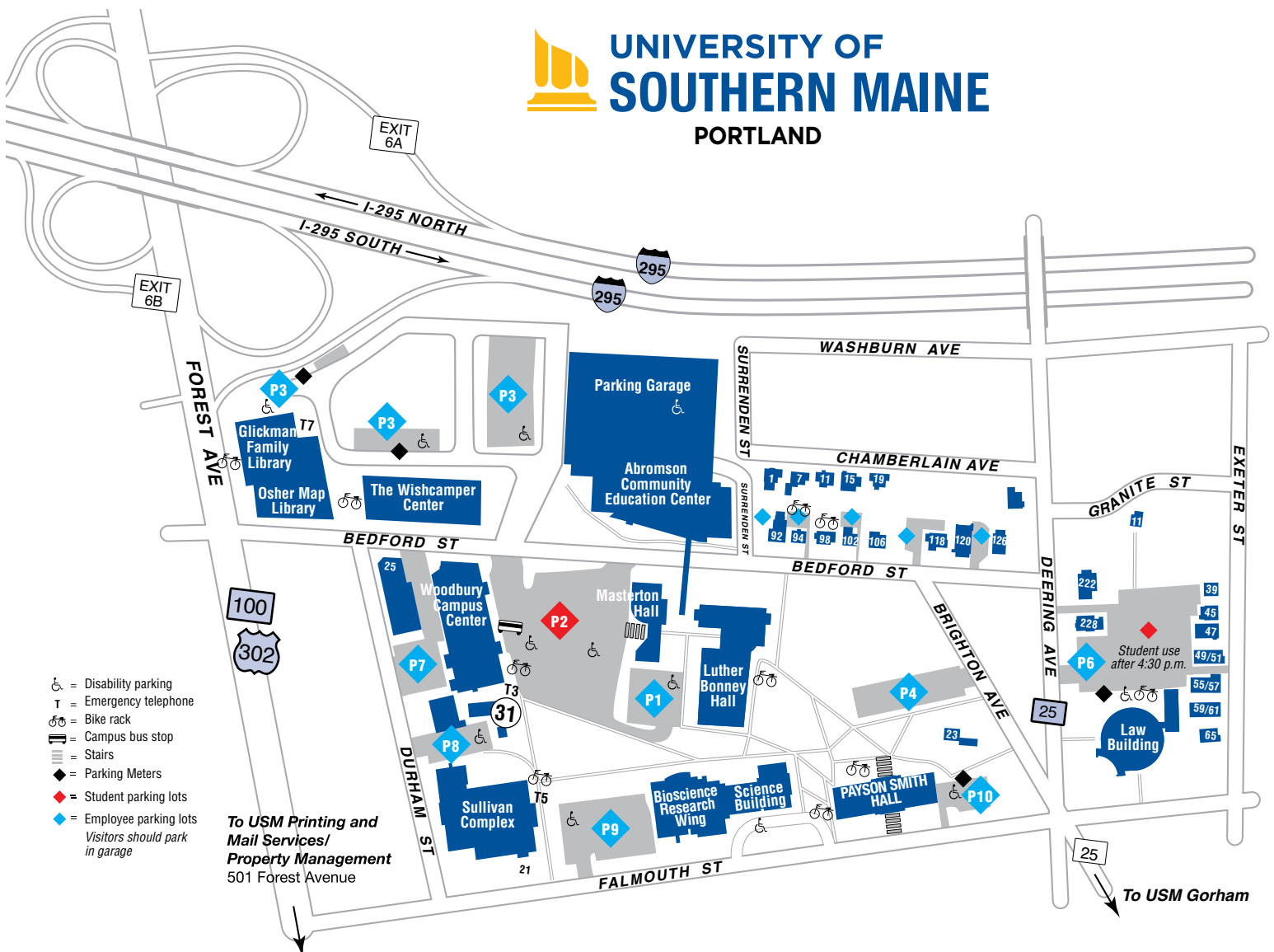
The Osher Lifelong Learning Institute at USM is based in the Wishcamper Center at 44 Bedford St. on the Portland Campus.

- OLLI classrooms are on the 1st and 2nd floors.
- The OLLI office is on the 2nd floor in Room 210.
- The elevator is off the lobby.

## PARKING AT OLLI

**Parking in surface lots on campus may earn you a parking ticket.** OLLI pays for our students to park in the USM garage on Bedford St. Simply push the button at the entrance to gain access to the garage. The exit gates will open automatically as you leave.

**To park in a handicapped space anywhere on campus, you must have a handicapped placard issued by the Maine Bureau of Motor Vehicles or a handicapped license plate. There are 20 handicapped spaces in the parking garage and eight in the parking lot directly behind the Wishcamper Center.**





# Tuesday Afternoon 12:45-2:45

## Exploring the Consciousness in Matter: Teilhard de Chardin and His Milieu Paul Doherty and Joan Aldrich

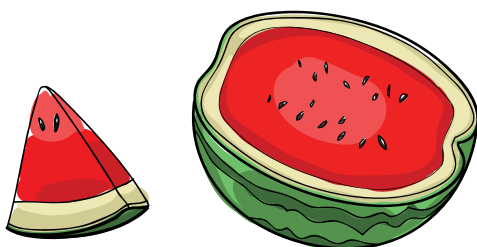
Pierre Teilhard de Chardin (1881-1955), paleontologist and Jesuit priest, foresaw a synthesis of religion and science, applicable to people of all religions and spiritual traditions. Scientists rejected his idea that evolution has a goal or specific direction (orthogenesis, or “conscious evolution”). The Church rejected his belief that the cosmos is continuously unfolding and Earth more than a mere platform for human progress. Teilhard described a “noosphere,” or “Divine Milieu”: responsive and alive universal interconnectivity. Some commentators have noted that the internet fulfills this vision, but for Teilhard, love was the guiding principle. Ever-increasing global ecological crises require a holistic scientific and moral response. Teilhard may be just the teacher for our times. We will examine others who have embraced “Teilhard’s Milieu”: Ignatius, Rilke, Keating, Nouwen, and others.

*Paul Doherty and Joan Aldrich, both MDiv, are eclectic thinkers who appreciate diversity. Together they will facilitate wide-ranging discussion following Teilhard’s example.*

## The Great Musical Composers Series: Rodgers & Hammerstein DeWayn Marzagalli

We will discuss the musical magic of Richard Rogers and Oscar Hammerstein II, from before they were united until their last musical. We will listen to and watch excerpts from *Oklahoma*, *Carousel*, *South Pacific*, *The King and I*, *Flower Drum Song*, and *The Sound of Music*. We will also explore some of their music composed with other giants of the theatre and music composed for television.

*Born in New York City, DeWayn and his wife have lived in Maine since 1975. Since retiring from Federal Law Enforcement, DeWayn spends much of his time doing volunteer work for his church and enjoying the opportunity to teach and take courses at OLLI since 2011.*



## Retirement Recap: Keep, Give, Enjoy, and Protect Your Money Kerry Peabody

**This repeat course** is an introduction to, and discussion of, a range of retirement issues. Topics include estate planning practices, insurance issues (Medicare Advantage plans, long-term care, life insurance, annuities, etc.), trends in recreation and travel, and retirement financial planning and practices. Experts in each field will present their specific topic, including an estate planning attorney, certified financial planner, travel expert, and insurance professional. No pre-work is required.

*Kerry Peabody, CLU, CLTC, is an insurance agent specializing in long-term care insurance and other senior products. With a network of estate-planning attorneys, CPAs, and financial planners, he helps prepare clients for the challenges they face during retirement. He is involved in the Southern Maine Agency on Aging and the Maine Estate Planning Council.*

### CLASSES / TUITION

- Summer classes are held once a week, from Tuesday through Thursday, except for Tuesday mornings, and run for six weeks, from June 19 through July 26.
- Morning classes run from 9:30 to 11:30; afternoon classes run from 12:45 to 2:45. Any exceptions to usual times are noted. There also are summer workshops on Friday (see pages 13-15).
- **You must be an OLLI at USM member to enroll in classes and workshops. Membership costs \$25 per fiscal year and runs July 1 to June 30. MEMBERSHIP RENEWALS ARE DUE WITH SUMMER REGISTRATION.**
- **Tuition is \$50 per course for regular OLLI at USM classes.** Workshops typically cost \$15 for single sessions and \$25 for two or three sessions or a full day. Exceptions to the usual pricing structure are clearly noted.
- In addition to classes, OLLI offers several Special Interest Groups. (See page 18 for a list.) **You must be a current OLLI member to participate in these.**

For news and updates on OLLI activities, read your *OLLI at USM Newsletter*, go to the OLLI at USM website ([www.usm.maine.edu/olli](http://www.usm.maine.edu/olli)), and check the literature racks in the main lobby and at the top of the stairs.



# Wednesday Morning 9:30-11:30

## Discovering the Courage to Create Paul Kiley

Imagining, remembering, sensing, and feeling are all gifts that we use as we engage with life — making things to express ourselves in the world, looking at beautiful works of art, enjoying the movements of a dancer, songs and laughter, the line made by our own paintbrush, and the special turn of the phrase by a writer. **This repeat course** is an invitation to share a journey of awakening or transforming the creative spirit within. Garrison Keillor, Mary Oliver, Gordon Bok, and Stephen Sondheim help out. A Personal Creativity Confidence Profile is offered. **Suggested books:** *The Courage to Create*, Rollo May, ISBN 978039331106; *The Winds of Creativity: Finding Fulfillment Through the Creative Act*, Richard Kimball, ISBN 9780944443071 (available used at amazon.com).

*Paul Kiley was a public relations consultant with Sacramento's B-Street Theatre and Ballet Arts-MN. He has sung with the Sacramento Bach Festival Chorale and championed the work of individual visual artists and writers. Paul has directed or appeared in some 24 theatrical productions.*

## The West and East: A Single Unity John McLaughlin

Hildegard and Queen Meera, Jesus and Sosa and other Zen masters, Meister Eckhardt and Lao Tsu, and the great Western unifier Heraclitus the Obscure. We'll engage in self-reflection, discussion, and the power of listening within, the amazing discovery of our omnipresent inner wisdom — and laughter at our strutting amidst the drama of life. How would it be to live like the lilies of the field?

*Educated at Oberlin College, Harvard, and the University of Amsterdam, John McLaughlin has long been on a path of spiritual awareness. A member of the Findhorn Foundation in the late '70s and mid '90s, he has also made repeated trips to India. He taught Practical Mysticism at USM in the '80s and at the College of Marin, 1999-2002.*

## What Do Animals Think and Feel? Steven Piker

Humans are animals. But how so? Often we think mainly of differences, humans and all other animals. This course treats similarities as well: morality, mental capacity, communication, empathy, altruism,

tool use, cooperation. And asks, Are humans truly exceptional? If so, how so? Case materials from many species, including our own, will be featured, and pet stories will be cherished grist for our discussion mill. Now and then, we will touch the evolution science base. **Suggested book:** *Are We Smart Enough to Know How Smart Animals Are?* Frans De Waal, ISBN 9780393353662.

*Steve Piker is a retired anthropologist who spent 44 years at Swarthmore College and now lives in Yarmouth two blocks from two of his three grandchildren. He has taught a number of courses at OLLI as well as at Midcoast and Lewiston/Auburn Senior Colleges.*

## Orchestration of War: Ellsberg, Movies, and the Unspoken Nuclear Threat Ed Solano

Daniel Ellsberg's new book, *The Doomsday Machine*, rouses far more than Dr. Strangelove's toothy grin picturing a male paradise surviving nuclear desolation. Ellsberg has warned American leaders since the '50s about the devastating consequences of accidental confrontations and bad assumptions. So let's discuss his alarming observations, while viewing what history, TV news, and movies reveal about how wars really start, become inevitable, and manipulate the roles played by government, media, citizens, politics, and international relations. Scenes are selected from *Wag the Dog*, *Fog of War*, *Failsafe*, *War Made Easy*, *Seven Days in May*, *An Unreasonable Man*, *All Quiet on the Western Front*, and *Dr. Strangelove*. **Suggested book:** *The Doomsday Machine: Confessions of a Nuclear War Planner*, Daniel Ellsberg, ISBN 9781608196708.

*Ed Solano is a former reporter, managing editor, marketing manager, teacher of history, government, economics, psychology, and English, plus college copywriting. He has a Master's plus 90 grad credits.*

**Register early online to ensure adequate enrollment in your favorite class!**

ENROLLMENT

- All OLLI at USM classes must have a **minimum of 12 registered students** to run.
- Enrollments are determined a few weeks prior to the first class or at the discretion of the OLLI staff. Under-enrolled classes will be cancelled. If classes are cancelled, all students will be notified of the cancellation. You will be given a full refund for the course or the opportunity to register for an alternate class.





# Wednesday Afternoon 12:45-2:45

## Psychology Looks at the Movies, 10 Mike Berkowitz

Let's focus on films. We'll use concepts and experiments from Psychology to shed light on cinema scenes. Mini-lectures and 15-minute video clips will provide a background for examining about 20 movies. We'll discuss the issues in the films and their applications to society at large. While some of the standard Psychology concepts will be reintroduced, all movies will be different from those in previous sections of Psychology Looks at the Movies. (Warning: Spoiler alerts throughout.)

*Mike Berkowitz received a BA from Brown and a MA from the University of Massachusetts. He taught in daycare centers, elementary schools, and colleges before finding his niche at OLLI. He sees Psychology as a fertile arena for examining human interactions, exploring personal growth, and critiquing society.*

## Mandala and the Circle of Life Linda Carleton

This course will provide an introduction to the use of mandala journaling as a tool for exploring our inner lives. It will examine the ways mandalas have been used across myriad cultures, introduce the mandala Great Round, and use a variety of mandala-making techniques to explore its 12 life stages. **A \$20 materials fee will include a mandala journal and all art supplies used in the class.**

*Linda Carleton is a retired minister and teacher of History and Comparative Religions. She is an artist who offers mandala workshops in and around Portland. You can visit Linda her website at [lindacarleton.com](http://lindacarleton.com)*

## Films on Teaching As a Calling Pat Davidson Reef

Teaching requires a love of learning and sharing ideas, dedication, patience, and the ability to communicate and listen. Most of all, it requires a love of humanity and the desire to shape the next generation. A good sense of humor helps a great deal. All these qualities can be found in these films: *To Sir with Love*, with Sidney Poitier; *Up the Down Staircase*, Sandy Dennis; *BlackBoard Jungle*, Glenn Ford; *Mr. Holland's Opus*, Richard Dreyfuss; and *Dead Poets Society*, Robin Williams. Come explore the triumphs and trials teachers experience as they learn from their students

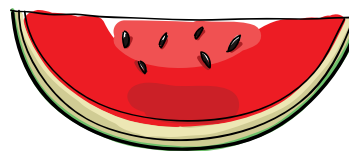
in the necessity to reach them and become a positive influence in their lives.

*Pat Davidson Reef has a Master's in Education and has taught at OLLI for 17 years. She taught English and Humanities for many years at Catherine McAuley High School. She writes for the Lewiston Sun Journal on the arts and has written two children's books, Dahlov Ipcar, Artist, and Bernard Langlais, Sculptor.*

## Explore Portland's Historic Neighborhoods on Foot Bruce Wood

**Starting June 20**, enjoy **six** narrated walks through Portland's historic neighborhoods exploring the city's history, architecture, and people since Europeans arrived. Discuss historic structures, locally and regionally famous architects and view their works, and immigrant populations. The longest walk in **this repeat course** will be two miles in two hours. The greatest elevation change will be from Congress Street to the waterfront and back. All walks will be on pavement, with side trips into two grassy cemeteries. **Rain or shine. Suggested book:** *Portland, A Short History* by Allan Levinsky, ISBN 9781933212432, USM price \$14.95. **Instructor will contact students about the meeting place prior to each class.**

*Bruce Wood moved to Portland after retiring as a computer programmer for Amtrak. He fell in love with the city's history and architecture and now serves on Portland's Historic Preservation Board. He leads tours of the Old Port for the Maine Historical Society, of the Victoria Mansion, and of the Observatory.*



### OLLI STUDENT HANDBOOK

Whether you're a new member or a returning "regular," there's lots to learn about OLLI.

In the OLLI Student Handbook, you can find information about the OLLI organization, membership, classes and other educational offerings, parking, registration, the arts at OLLI, tips on staying informed, and much more.

You can find the Student Handbook under the "Resources" heading on the OLLI website: <https://usm.maine.edu/olli>.

## Chinese Painting: Landscapes and Seascapes Sabine de Canisy

The first part of **this repeat course** will be an in-depth review of painting landscapes. We'll review bamboos, trees, leaves, and waterfalls; the three perspectives; composition; and the always-present symbolism, embodied by the concept of yin and yang. We'll then move to the simplicity and changing moods of seascapes and the value of adding color. **Required materials:** Brushes — one fine, two medium, one thick; black ink — Chinese stick or watercolor; and three or four small porcelain or plastic containers; rice paper, sheet or roll. **Class will start June 14 and run for seven weeks.**

*Painting has been a part of life for Sabine de Canisy from the age of 6. She studied Chinese painting while living in the Far East, first in Bangkok, then four years in Manila, followed by seven years in Taipei. Since coming to the U.S. she has taught seascape painting in Oregon while continuing to paint for herself and her friends.*

## Summer Film Festival Terry Foster

This course examines six films, with discussion and popcorn included: *The Dead*, a James Joyce story of an Irish Twelfth-Night party, starring Angelica Huston; *Amazing Mr. X*, a widow contacts her late husband via a medium, Lynn Bari and Turhan Bey; *Terror of Tiny Town*, an all-midget western, Billy Curtis and Yvonne Moray; *Isle of the Dead*, an army general visits an island where plague is blamed on vampirism, Boris Karloff; *Love Serenade*, a comedy of two Australian sisters seeking love; and *Babette's Feast*, Academy Award winner set in Denmark, where a chef revives the souls of religious folk via culinary skills and caring.

*Terry Foster has enjoyed and studied films all his life. His academic credentials include two Master's degrees and a*

*Doctorate in higher education. He is co-founder of Senior College, OLLI's predecessor, and has taught at OLLI since its inception.*

## 19th-Century America: Prequel to the American Century Alicia Harding

The events, achievements, and ideas of 19th-century America laid the foundation for American domination in the 20th. We will include such topics as westward expansion, the industrial revolution, women's suffrage, the Dred Scott decision, and Plessey vs. Ferguson and how they determined what the country would become as a world power. We will look in depth at Harriet Beecher Stowe's book, both in its influence on the Civil War and on later American society. **Required book:** *Uncle Tom's Cabin*, Harriet Beecher Stowe, ISBN 9780486440286, USM price \$7. (Any edition is ok.)

*Alicia Harding is an instructor in History and American Government at Southern Maine Community College. She retired from Deering High School in 2000 and has since enjoyed teaching at the college level, most especially at OLLI. She has a Master's in European Intellectual History, has attended workshops at the Metropolitan Museum of Art, and received a National Endowment of the Arts grant to study in England.*



### Membership in OLLI at USM entitles you to:

- Parking in the USM garage, courtesy of OLLI at USM
- Access to the USM libraries, computer labs, bookstore, and fitness center
- Discounted membership to Sullivan Gym
- Guest access to USM's on-campus wireless Internet
- Preferential mailing of OLLI course catalogs and SAGE brochures
- Free participation in any OLLI Special Interest Group
- A free OLLI-designated USM student photo ID good for some local discounts and special offers (details at <https://usm.maine.edu/usmcard/offcampus>). Visit the OLLI office to complete an ID request.

### STUDENT PRIVILEGES

### REFUND POLICY

- You will receive a **100 percent refund if you cancel by the END OF YOUR SECOND WEEK OF CLASS**. No refund after that point. No refunds are given for OLLI at USM annual membership fees. To transfer from one course to another, or to drop a course, call the OLLI office at 780-4406.
- If OLLI cancels a class due to low enrollment, you will be notified and offered the option of a refund or an alternate course.



# Thursday Afternoon 12:30-3:30

## Spiritual Aspects of Relationship: A Series of Film Discussions Joan Aldrich

We'll shine a close-up lens on relationships of all kinds, intimate and platonic, and consider how one's destiny, even in angelic realms, might be altered by the influence of a loved one. Featured films: *Defending Your Life* (two souls, transitioning from lives with varying levels of heroism, become friends in the afterworld); *Just Like Heaven* (not all ghosts are what they seem); *Peggy Sue Got Married* (a middle-

aged woman time-travels back to her 1950s youth); *Shadowlands* (the true story of C.S. Lewis' late-in-life marriage); *Wings of Desire* (an angel assumes the limitations and joys of a human lifespan, because of love); and *A Walk to Remember* (a troubled young man alters course after befriending someone with different values). If we are "spiritual beings having a human experience" (de Chardin), can loving another help us transcend limitations of personality, character, and time?

*Joan Aldrich provides background information and facilitates thoughtful discussions about each film.*



# Thursday Afternoon 12:45-2:45

## Memoir Story Circle Norman Abelson

**This repeat course** features oral family storytelling. Weekly, students will prepare and tell the circle brief stories from their lives, using written points to guide them. Fellow students will relate to, comment upon, and gently critique each other. Instructor will guide and comment upon performances. Students may also write memoir pieces based upon their oral deliveries. **Required book:** *Right Place, Right Time*, Norman Abelson (supplied by instructor).

*Norman Abelson has been telling and writing stories about his family and life for most of his 87 years. He also teaches a course called Keeping Memory Alive: Family Memoir. He's working on his third book of memoir and second book of poetry.*

## Visiting and Revisiting Shakespeare: Plays and Sonnets, Part 2 Evy Newlyn

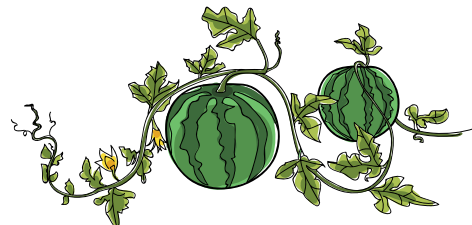
Now, in our increased maturity and wisdom, is a good time to visit, or revisit, the Bard, and see what he now brings to us, and what you and I, and recent scholarship, now bring to him. We will read and discuss two of the great tragedies and similarly explore some of the sonnets. No prior knowledge is necessary. **This is not a repeat course. Required books:** *Hamlet*, William Shakespeare, ISBN 9780486475721, USM price \$5.95; *Romeo and Juliet*, William Shakespeare, ISBN 9780486275574, USM price \$3; *Shakespeare's Sonnets and Poems*, Barbara A. Mowat & Paul Werstine, ISBN 9780743273282, USM price \$13.95.

*Evy Newlyn is Professor Emerita of English from the State University of New York. After earning her Ph.D. in English from Syracuse University, she taught at universities in Virginia, Maine, and New York. Her special interests are Classical literature, medieval literature, Shakespeare, and cats.*

## Paper Arts Camp: Reviving the Snail-Mail Tradition Dianne Sinclair

Remember snail mail? The anticipation of opening your mailbox? Let's revive the tradition! You will learn three different techniques for decorating paper. Then we will transform our favorites into a variety of cards and envelopes. The class will be hands-on and sometimes messy; the atmosphere relaxed, cooperative, and supportive. **Required supplies:** bone folder, metal ruler (cork-backed is best), mechanical pencil with eraser, scissors, and small bottle of white glue. If you already have them, bring a cutting mat and sharp X-Acto knife. You can find any of these at Artist & Craftsman and get a student discount.

*Dianne Sinclair has taught other hands-on art classes at OLLI, including Hand-Making Books, Paper Arts Camp, and Transforming Paper. She is an untrained artist who loves inspiring and being inspired by participants in her classes, both beginners and experienced artists.*





# Friday Morning

9:30-11:30

## History of Portland through Six Walks

John Serrage

We will meet for six one-and-a-half to two-hour leisurely walks to historic sites of Portland — **rain or shine. This repeat walk series** proceeds from east to west across the peninsula, tracing the history of Portland as it developed westward. Please meet at the following locations: the first walk at India and Commercial streets, the second at the base of the Observatory on Munjoy Hill, the third at the Longfellow House on Congress Street, the fourth in front of the Art Museum, the fifth at the corner of Vaughan and Danforth streets in the West End, and a sixth and last walk in Stroudwater, starting at the Tate House. **Suggested book:** *Portland, A Short History*, Allan Levinsky, ISBN 9781933212432.

*John Serrage, a retired pediatrician, is an organist, opera lover, and Portland history buff.*

### BOOKS AND CLASS MATERIALS

- **Acquiring books and materials is the student's responsibility.**
- Books and materials will be listed in each course description as **Required** (the class — i.e., a literature course — cannot function without the book) or **Suggested** (it would enhance the class but is not necessary). If no books or materials are listed in a course description, none are needed.
- Prices are listed only for required books and reflect USM Bookstore prices.
- For your convenience, all required books and a limited number of copies of suggested books will be carried in a special OLLI-designated section at the USM Bookstore on the USM Portland campus. **However, students also are welcome to procure books from other sources, including online vendors, local libraries, and friends.**





# SUMMER WORKSHOPS

Friday, July 6 9:30-11:30 a.m. \$15

## **Dread Having Difficult Conversations? Tips for a More Successful Outcome**

**Anne Cass**

Did you ever duck a tough conversation, wishing it would disappear? Ever wish you could just dive in? Diving into discomfort is much easier with some planning. In this session we will discuss planning, share tips to get started, and practice – with volunteers only. This is not therapy! Discussion will arise from the shared experiences of the group, with the goal of increasing your comfort level through knowledge and practice. No book is required, yet resources abound – bring your favorite to share. The instructor's is *Difficult Conversations: How to Discuss What Matters Most* by Douglas Stone, Bruce Patton, and Sheila Heen of the Harvard Negotiation Project.

*Anne Cass retired in 2017 after 43 years as an educational leader. A skilled facilitator with broad experience as a teacher and administrator in both independent and public schools, she believes in building relationships through clear communication, trust, and honesty. She is an Associate at Heart of Character ([www.heartofcharacter.org](http://www.heartofcharacter.org)).*

Friday, July 6 9:30-11:30 a.m. \$15

## **Opera! Music and Words**

**Calien Lewis**

This unique workshop is designed to engage, educate, and entice participants about opera. It will put Mozart's music and *The Marriage of Figaro* into broader contexts – musically, socially, and historically. By focusing on Da Ponte's transformation of Beaumarchais's play into a libretto for Mozart, we will explore opera's dual relationship with music and words, and the creative process of adapting a written story for opera.

*Calien Lewis has formal training in music and theatre and has worked with Opera Maine since 1997, serving as scenery painter, prop master and dramaturg. As dramaturg she has conducted research for the production team and presented Opera Maine's repertory in various venues.*

Friday, July 6 9 a.m. - 1 p.m. \$15

## **James Joyce's *The Dead***

**Bob McCue**

*The Dead* is the final story in James Joyce's first published prose work, *Dubliners*. It's been celebrated as the finest short story ever written in English. **For this workshop, please read the story prior to meeting; instructor will provide an online link in advance.** We'll then discuss, among other elements, its genesis and differences in tone and attitude as compared to the other stories in *Dubliners*. John Huston's film recreation of the story will be liberally accessed throughout our time together. (Noteworthy is the hotel scene in the final passages. It draws strong emotions from many who read it and/or view it.)

*Bob McCue prides himself on being vertical and respirating, at least for now. He has been a contributor at OLLI-USM since 2007 and concurrently at UofA and Carolina Coastal University. His vocational experience is in engineering and general management.*

Friday, July 6 & 13 9:30-11:30 a.m. \$25

## **Poems that Move Us: Exploring Human Connections**

**Paul Kiley**

For starters, participants will read aloud from a new collection: The words of men of international distinction confessing to being moved to tears by poems that continue to haunt them and why. Their selections include the writings of Walt Whitman, Elizabeth Bishop, and W.H. Auden, as well as contemporary works by Mary Oliver and Seamus Heaney. Themes range from love in its many guises, through mortality and loss, to the beauty and variety of nature, dealing with the horrors of warfare, and living well. This two-part workshop will also provide the opportunity for participants to reflect on these selected works and share, perhaps, what poems in their lives make them misty-eyed and why.

*Paul Kiley's poems have appeared in OLLI's Reflections literary magazine. He has taught "The Courage to Create" and "Adventuring Solo" classes at OLLI during the past three years.*

Friday, July 6, 13 & 20 9:30-11:30 \$25

## Introduction to Buddhism and Meditation

Heather Edgerly

**This three-part, repeat workshop** will be an introduction to the family of religions called Buddhism. We will discuss the development of Buddhism in India, focusing on the life and teachings of its founder, and will then briefly follow its spread across time and space through Asia and the West. Along the way, we'll focus on enduring Buddhist ideas and practices and will end by exploring the theory and practice of meditation. In each session, we will engage in a brief guided meditation practice. **Suggested books:** *Buddhism: A Very Short Introduction*, Damien Keown, ISBN 9780199663835; *The Miracle of Mindfulness: An Introduction to the Practice of Meditation*, Thich Nhat Hanh, ISBN 9780807012390.

*Heather Edgerly began studying Eastern Religion 15 years ago and has received degrees in Religion from the University of Hawaii and Harvard University. She taught Buddhism and Eastern Religion at the University of North Carolina and currently leads classes in the theory and practice of meditation.*

Friday, July 13 9:30 a.m.-12:30 p.m. \$15

## Maine's Beaches Are Public Property: The Bell Cases Must be Reexamined

Orlando Delogu

The title of the workshop is the title of the instructor's book, published in December 2017. It forcefully argues that the 1986, 1989 Bell cases ceding Maine's title to its intertidal land to adjacent upland owners were wrongly decided. We will explore the numerous errors of the court, which can and should be corrected. Lawyers, legislators, and the courts have a role to play in changing the law — but an informed public can/should facilitate this end. **Suggested book:** *Maine's Beaches Are Public Property: The Bell Cases Must Be Reexamined*, Orlando E. Delogu, ISBN 9780998979892. (A few copies also will be available at the workshop.)

*Orlando Delogu, Emeritus Professor of Law, taught full-time at the University of Maine School of Law for 40 years. Areas of expertise include land use law, environmental law, state/local government law. He has written on these issues for 35 years, including amicus briefs to the Law Court. He holds BS, MS, JD degrees.*



Friday, July 13 9:30-11:30 a.m. \$15

## Migratory Bird Monitoring at River Point Bird Observatory

Patrick Keenan

Join the Biodiversity Research Institute at River Point Bird Observatory (West Falmouth, ME) for an interpretive discussion about our use of bird banding in research. Topics will include bird identification, bird migration, and the role of birds in understanding climate and landscape changes. The class will be held at the Observatory. **Required:** Appropriate clothing for the day's weather and insect repellent for the biting insects and ticks at the site. **Recommended:** Binoculars, a field notebook, water, and snacks. **Required book:** *The Sibley Field Guide to Birds of Eastern North America: Second Edition*, David Sibley, ISBN 9780307957917, USM price \$19.95. (Any guide to eastern North America birds is fine.)

*Patrick Keenan is Outreach Director, Wildlife Biologist, and Educator for River Point Bird Observatory. He has conducted bird research across the U.S. for nearly 20 years and has worked with the Biodiversity Research Institute since 2008. His work locally in Falmouth has engaged students of all ages who are interested in birds and conservation.*

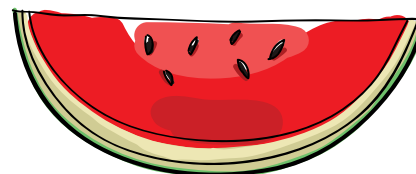
Friday, July 13 9:30-11:30 a.m. \$15

## The Music of the Cinema, Part 3 – From the '80s to the Present

DeWayn Marzagalli

We will reexamine the importance of music in enhancing the cinematic experience. We will highlight a few more great movie composers whose work has stood the test of time and is frequently heard in symphonic halls: Bernard Hermann (*Taxi Driver* and *Cape Fear*), Jerry Goldsmith (*Alien*), John Williams (*Star Wars*, *Close Encounters*, *ET*, and *Shindler's List*), John Barry (*James Bond*), Hans Zimmer (*Gladiator*, *Hannibal*, *Man of Steel*), Howard Shore (*The Lord of the Rings Trilogy*), and an interview with Ennio Morricone, et. al.

*Born in New York City, DeWayn and his wife have lived in Maine since 1975. Since retiring from Federal Law Enforcement, DeWayn spends much of his time doing volunteer work for his church and enjoying the opportunity to teach and take courses at OLLI.*



Friday, July 13 9:30-11:30 a.m. \$15

## Understanding the National Security Clearance Process

Dan Possumato

The issue of security clearances has been in the news a lot lately. But what exactly is involved with granting federal government security clearances? How many agencies are authorized to issue clearances? How is someone's background investigated to help ensure they are trustworthy, of good character, loyal to the nation, and not unduly susceptible to blackmail? We will discuss the process from start to finish, with real life examples, of what goes into granting someone a security clearance, and also the roadblocks that make it difficult to reach a proper assessment. **This is an expanded portion of a previous session.**

*Dan Possumato is a graduate of the U.S. Army War College and is a retired Army civilian. He has held a top-secret security clearance for over 20 years, and he currently conducts background investigations for the U.S. Department of State.*

Friday, July 13 9:30-11:30 a.m. \$15

## Hidden Ireland: A Native's Perspective

Ann Quinlan

Irish roots or not, people from all over are drawn to this small (size of Indiana), lush, green island called Ireland. A stalwart example of survival through countless invasions, hunger, and loss of land, the Irish people's interior way of life has sustained a deep cultural heritage and a deep connection to the land. Ireland's famous hospitality is not a myth. Ireland straddles a prehistoric past, recent financial challenges, and a prominent role within The European Community, and the Irish engage with neighbors or strangers while putting on the tea kettle at a moment's notice. **This is a repeat workshop.**

*Ann Quinlan was born and educated in Ireland. While raising her children she was frequently sought after for best ideas on traveling to her native land. Delighted to share the more hidden aspects of her homeland, in 1988 Ann founded Spiral Journeys Inc., an exclusive small company offering spring and autumn land journeys in Hidden Ireland.*

Friday, July 20 9:30-11:30 a.m. \$15

## PowerPoint Slideshows: Inserting Videos

Mike Berkowitz

Have you made slideshows before, but now want to insert video clips seamlessly into your presentation?

Come watch various methods to do that. We'll look at ways you can incorporate YouTube videos, your own movie clips, and sections from DVDs directly into your shows. We'll also see how you can edit the clips down to include just those portions you want in your presentation. While this is not a hands-on workshop, you can watch demonstrations of Wondershare's AllMyTube, Wondershare's DVD Ripper Platinum, and Windows' Movie Maker. They can work magic for you.

*Mike Berkowitz received a BA from Brown and a MA from the University of Massachusetts. He taught in day care centers, elementary schools, and colleges before finding his niche at OLLI. He enjoys introducing new ideas and skills to the appreciative folks at OLLI.*

Friday, July 20 9:30 a.m.-3:30 p.m. \$25

## Where We End Up, and How

Janet Gunn

This workshop will be a day-long examination of where we are as we grow old, a matter of location. Where, in fact, are we, in terms of place, for example: How far from "home"? How did we get here? What is keeping us here? How adequately are we being "held in place," or to what extent do we feel "held," not trapped? The workshop will be based on the instructor's personal experience, as she asks: Where am I ending up? What are endings, anyhow?

*Janet Gunn recently moved into "retirement" digs at the Motherhouse of the Sisters of Mercy, a one-bedroom space with windows that once opened onto the alter below for those nuns who were under the weather. Those windows will be replaced by her kitchen wall, food-as-prayer.*

Friday, July 20 9:30 a.m.-3:30 p.m. \$25

## The God Delusion

Steven Piker

This workshop will evaluate Richard Dawkin's book, *The God Delusion*, in which, from the point of view of natural science, he purports to invalidate religion. This will take us into a number of big general issues, e.g., faith, reason, belief, why religion has been and remains such a vital part of the human career, is religion a force for good or evil in the human career, and much, much more. Lecture in the morning and discussion in the afternoon. **Suggested book:** *The God Delusion*, Richard Dawkin, ISBN 9780618918249.

*Steve Piker is a retired anthropologist, with 44 years at Swathmore College. He now lives in Yarmouth, two blocks from two of his three grandchildren. Steve has offered several courses at OLLI, Midcoast Senior College, and Lewiston/Auburn Senior College. He cherishes the senior college ambience.*



# Course Registration — SUMMER 2018

**If mailing, send to: OLLI at USM, P.O. Box 9300, Portland, ME 04104**

**NOTE: OLLI courses cost \$50, unless otherwise noted. Workshops are individually priced.**

Name (one person per form) \_\_\_\_\_

I need an OLLI name tag — Nickname for name tag \_\_\_\_\_

Mailing address \_\_\_\_\_

City \_\_\_\_\_ State \_\_\_\_\_ Zip \_\_\_\_\_

Telephone \_\_\_\_\_ E-mail address \_\_\_\_\_

Date of Birth \_\_\_\_\_ Are any of these new?  Address  Phone  E-mail

	Course/Workshop Name		Course/Workshop Name	Cost
1st Course		Alternate 1st Course		
2nd Course		Alternate 2nd Course		
3rd Course		Alternate 3rd Course		
4th Course		Alternate 4th Course		
Workshop 1				
Workshop 2				
Workshop 3				
			<b>TOTAL COST FOR ALL</b>	

**OFFICE USE ONLY**

Check #: \_\_\_\_\_

CC (last 4 #s): \_\_\_\_\_

Cash: \_\_\_\_\_

Misc: \_\_\_\_\_

ENROLE (Init.): \_\_\_\_\_

Date Processed: \_\_\_\_\_

\_\_\_\_\_ Total course and workshop fees

**\$25** All membership renewals due with summer registration.  
 \_\_\_\_\_ Annual membership (**FREE if you're 90 or older! Check** )

\_\_\_\_\_ Your **Tax Deductible Contribution to OLLI** is welcome

\_\_\_\_\_ Total amount (Please make check payable to OLLI)

Payment Method:  Cash  Check Credit Card:  Visa  MasterCard  Discover

.....

Credit Card No. \_\_\_\_\_ Expiration Date \_\_\_\_\_

3-digit code on back of card \_\_\_\_\_ Name on credit card \_\_\_\_\_





# OLLI Registration Information

Register online at [www.usm.maine.edu/olli](http://www.usm.maine.edu/olli) starting April 30.

Registration will open at 12:01 a.m.

Class availability is first come, first served.

OLLI accepts mail-in and walk-in registrations, but the immediacy of online registration clearly gives the advantage to students who sign up for classes on our website. Please consider giving online registration a try to ensure that you get into your chosen classes.

**(Need computer assistance? See p. 3 for an onsite-help schedule.)**

## INSTRUCTIONS FOR MAIL-IN REGISTRATION

- Please use **ONE FORM** for each registrant.
- Fill out the top section of the registration form **completely**. Leaving sections blank can slow registration.
- Write the course names for your **top selections** for classes in the “1st Course,” “2nd Course,” “3rd Course,” and “4th Course” sections on the registration form. Note the price of each course in the “Cost” column.
- If you are concerned that your top choices will be filled, you may want to add alternate choices. Please write offering names for your **alternate choices** in the “Alternate 1st Course,” “Alternate 2nd Course,” “Alternate 3rd Course,” and “Alternate 4th Course” sections on the form.
- Sign up for OLLI workshops on the same form. Write the name of your chosen workshop(s) in the space provided, along with the price of the workshop.
- Add up the fees for your courses and workshops (and membership, if applicable) and note that amount in the space marked “Total Cost for All.”
- As soon as your payment is processed and you are enrolled in your class and/or workshop, you will receive an e-mail confirmation. If you do not have an e-mail account, we will mail you a confirmation.

## EXPENSES

Unless otherwise noted, **OLLI at USM courses cost \$50**. Workshops are priced based on the length of each session.

**You must be an OLLI member to take courses or workshops.** Annual **OLLI membership costs \$25**.

Questions about registration or membership? Call OLLI at 780-4406.

## REFUNDS

Full refund for classes dropped by **June 29. NO REFUNDS AFTER THAT POINT.**

You will be refunded for any classes OLLI cancels.



## Contact Information OLLI at USM Office

● **Phone:** 780-4406

● **Location:**  
44 Bedford St.  
210 Wishcamper Center  
USM Portland Campus

● **Mailing Address:**

Osher Lifelong Learning Institute  
USM  
P.O. Box 9300  
Portland, ME 04104



# Special Interest Groups at OLLI

**From September through June**, OLLI at USM offers many diverse activities beyond the classroom. To participate in any Special Interest Group, you must be a current OLLI member. **NOTE: Special Interest Groups are not intended as instructional events.**

● **Arts and Crafts:** Try your hand at a new skill on the first Thursday of each month at 3:15 p.m. A member of the group will demonstrate and lead an activity (fabric and paper crafts, jewelry making, book arts, knitting, crocheting, mixed-media collage, etc.). Contact Sue Jennings at [jensusa10@gmail.com](mailto:jensusa10@gmail.com) for more information.

● **Bicycle and Nosh:** If you like to bike, how about joining a group of OLLI members for a ride every couple of weeks, with a delicious treat along the way? Contact Deidre St. Louis at [deedee.st57@yahoo.com](mailto:deedee.st57@yahoo.com) for more information.

● **Book Club:** Members meet the third Thursday of each month from 3:15 to 5:15 p.m. to discuss readings from a variety of genres, including contemporary novels, classics, biographies, memoirs, short stories, etc. Contact Karen Day at [kday0718@gmail.com](mailto:kday0718@gmail.com) or Elsa van Bergen at [eivanbergen2@gmail.com](mailto:eivanbergen2@gmail.com) for more information.

● **Bridge Club:** Those who enjoy playing bridge for fun are welcome to join this group every Wednesday from 3:15 to 5:15 p.m. Contact Barbara Freeman at [bhfreewoman@gmail.com](mailto:bhfreewoman@gmail.com) for more information.

● **Downhill Ski Club:** A seasonal outlet for downhill skiing enthusiasts, the club welcomes new and returning members. Skiers plan trips to area mountains when snow conditions are good and driving conditions permit. Contact Lois Winter at [loiswinter54@gmail.com](mailto:loiswinter54@gmail.com) for more information and to join our email list for notice of upcoming ski trips.

● **Elders for Future Generations:** This is an ongoing, peer-facilitated exploration of the advocacy role seniors can play in shaping policy to promote the well-being of future generations. Contact Fred Brancato at [opus3@twc.com](mailto:opus3@twc.com) for more information.

● **History Book Club:** Members read and discuss one work of history on the second Wednesday of each month from 3:15 to 5:15 p.m. Works include social, political, economic and foreign-policy history as well as biography, autobiography, memoir, and historical fiction. Contact Sue Gesing at [susangesing@gmail.com](mailto:susangesing@gmail.com) or Dawn Leland at [lelanddm@gmail.com](mailto:lelanddm@gmail.com) for more information.

● **Mah Jongg:** Join players every Friday from 3:15 to 6 p.m. in Room 103 at Wishcamper. National Mah Jongg rules and cards are used. Contact Karen Chippiaro at [kchia@comcast.net](mailto:kchia@comcast.net) for more information.

● **OLLI Night Out:** Come enjoy good food and good company with fellow OLLI gourmands who meet periodically at local restaurants. Watch the *OLLI Newsletter* for upcoming dates and locations.

● **OLLI Singers:** This group, directed by an experienced leader and supported by a skilled accompanist, meets every Thursday at 3:15 p.m. to have fun with vocal music and prepare for several performances each year. All are welcome. Contact Chuck Hornberger at [ckhornberger@gmail.com](mailto:ckhornberger@gmail.com) for more information.

● **OLLI Ukuleles!** meets on the second and fourth Monday from 3:15 to 5:15 p.m. to share and have fun playing a wide variety of ukulele music. All levels welcome. Contact Cheryl Eling at [cfeling@gmail.com](mailto:cfeling@gmail.com) for more information.

● **Outdoor/Walking Club:** Outdoor enthusiasts gather twice a month for invigorating walks in interesting places. They meet at the Back Cove parking lot and carpool. Walking schedules for the year can be found in the OLLI office and in literature racks in Wishcamper. Contact Rae Garcelon at [raegarcelon@gmail.com](mailto:raegarcelon@gmail.com) for more information.

● **Photography Club:** Shutterbugs at OLLI at USM meet and learn from each other while sharing their love of photography. Contact Sharon Roberts at [sharonlh@gwi.net](mailto:sharonlh@gwi.net) for more information.

● **Recorder Ensemble:** In addition to having fun making music together, the Recorder Ensemble also may perform at OLLI at USM events and venues. Contact Karen Luse at [luse.karen@gmail.com](mailto:luse.karen@gmail.com) for more information.

● **Science Reading Club:** Each month this group reads and discusses articles from the latest issue of *Scientific American*. See the website at <https://olliumssciencediscussion.wordpress.com> or contact Elizabeth Housewright at [ehousewright@gmail.com](mailto:ehousewright@gmail.com) for more information.

● **Senior Players:** Thespians perform staged readings twice a year at USM and off campus on several occasions. Senior Players is open to all OLLI at USM members. Contact Allan Mills at [aljeevbr@gmail.com](mailto:aljeevbr@gmail.com) for more information.

● **Wine-Tasting Club:** An OLLI wine enthusiast helps educate your palate during featured wine-and-appetizer pairings at a local restaurant. The group meets at 5:30 p.m. every month or so. Novices and wine enthusiasts welcome. Contact Jack Lynch at [JLynch001@maine.rr.com](mailto:JLynch001@maine.rr.com) if you'd like to join an e-mail list for advance notice of date, price and venue.



# OLLI at USM

## Mission

**OLLI at USM is committed to providing, for its members, a wide variety of stimulating courses, lectures, workshops, and complementary activities in a creative and inclusive learning community.**

## Vision

**OLLI will be driven by the creative and innovative spirit of its founding mission, will maintain its strong sense of community and inclusiveness, expand its abundant opportunities for members to exchange ideas and experiences, and maintain a standard of excellence.**

## Core Organizational Values

These are the fundamental beliefs of OLLI at USM that guide our planning and decision-making. These core values support our vision, shape our culture, and reflect what we value.

**Joy of Learning** — We believe that continuing to grow and learn new things is a deeply fulfilling lifelong priority.

**Community** — We recognize the importance of interaction with other members to share knowledge and experiences, to expand our perspectives, and to make new friends, in an atmosphere of inclusiveness, respect, and openness.

**Accessibility** — We strive to make classes, lectures, workshops, seminars, and activities affordable and accessible for all members.

**Excellence** — We strive for excellence by committing our intelligence, creativity, and energy to achieving quality in our curriculum, faculty, facilities, operations, and relationships within our community.

**Volunteerism** — We recognize the crucial importance of volunteers to the success of our programs.



*Intellectual Fun  
for People  
over 50*

OSHER  
LIFELONG  
LEARNING  
INSTITUTE



[www.usm.maine.edu/olli](http://www.usm.maine.edu/olli)