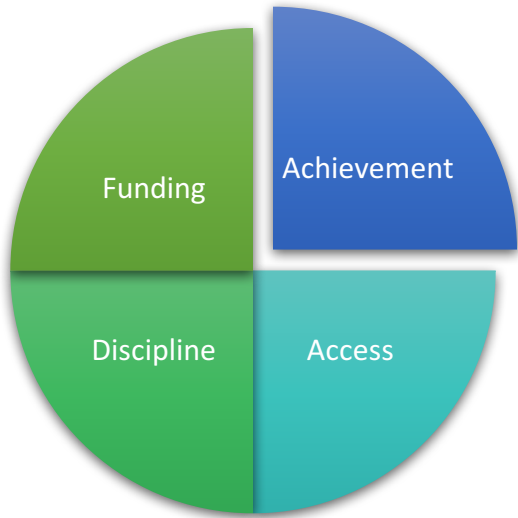


# Equity & Excellence in Maine Schools

## South Portland High School Equity Snapshot

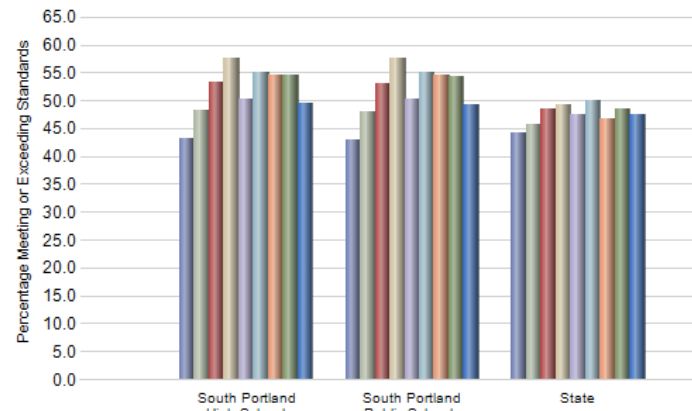
South Portland High School



Name Public High School  
Graduation Rate for 2014  
 86.5% compared to 83%  
 state average

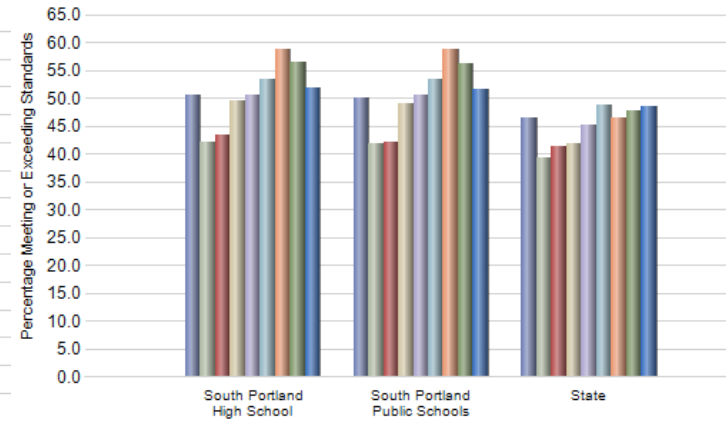
2014 Reading  
 49.5 SPHS  
 47.6% state

MHSA - Reading - Meeting or Exceeding Standards (As of Date:03/31/2014)



05-06 06-07 07-08 08-09 09-10 10-11 11-12 12-13 13-14

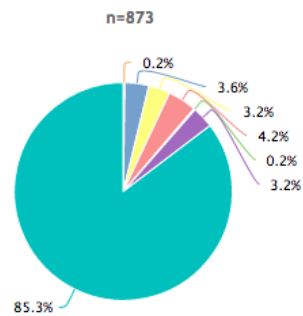
MHSA - Mathematics - Meeting or Exceeding Standards (As of Date:03/31/2014)



05-06 06-07 07-08 08-09 09-10 10-11 11-12 12-13 13-14

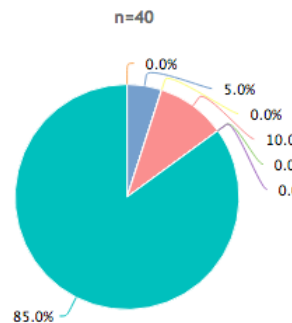


School Enrollment

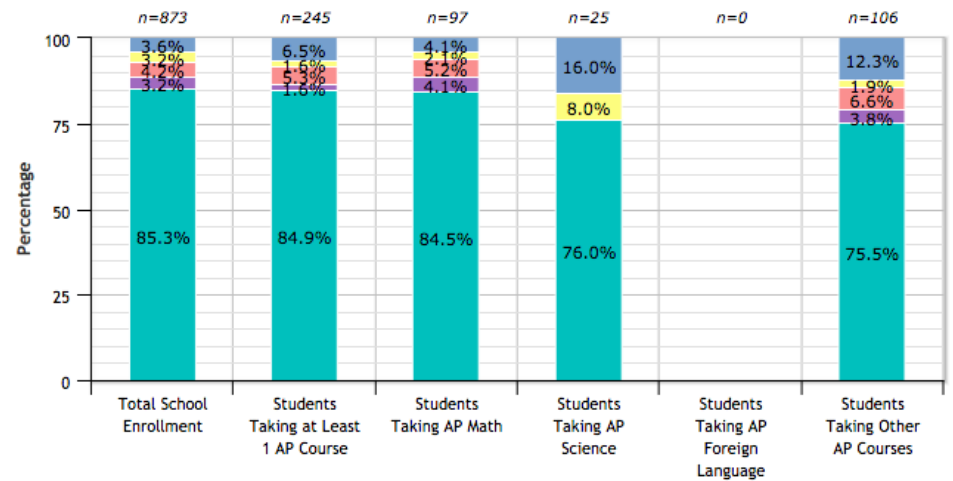


Am Ind/AK Nat 0.2% Asian 3.6%  
 Black 3.2% Hispanic 4.2%  
 Nat HI/Pac Isl 0.2% Two or More 3.2%  
 White 85.3%

Gifted & Talented Enrollment



Am Ind/AK Nat 0.0% Asian 5.0%  
 Black 0.0% Hispanic 10.0%  
 Nat HI/Pac Isl 0.0% Two or More 0.0%  
 White 85.0%

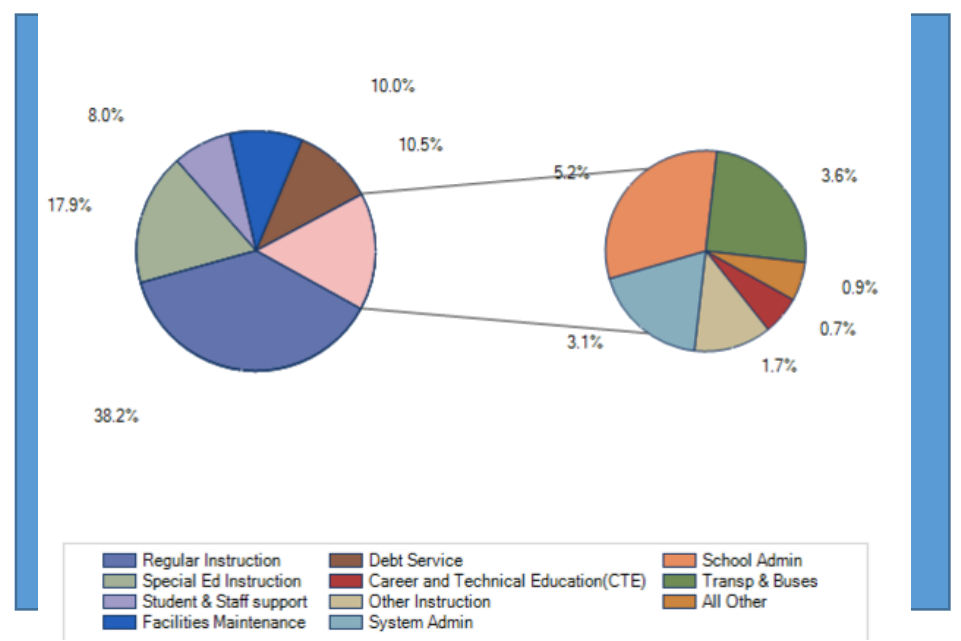


Am Ind/AK Nat Asian Black Hispanic Nat HI/Pac Isl Two or More White



Finance		
Measure	Budget	State Avg.
Per Pupil Expenditures:		
Regular Instruction:	N/A	5,127
Special Education:	N/A	1,953
School Administration:	N/A	666
Debt Service:	N/A	756
Facilities:	N/A	1,409
* Total for all measures(Not just those above):	N/A	12,551

Finance - Per Pupil Expenditure by Type (As of Date:12/01/2014)



Discipline - demographic representation in suspensions and expulsions from 2010-2011 as reported to Office of Civil Rights

